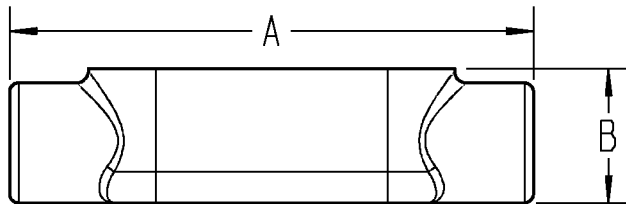
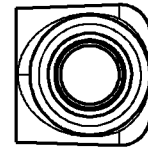
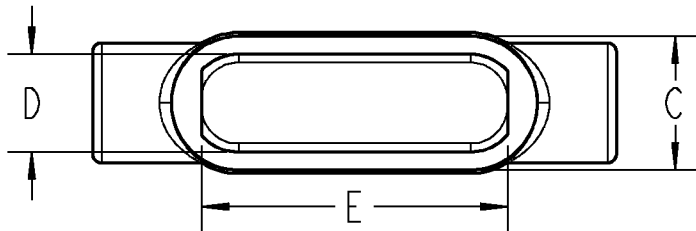




T&B Fittings



| CAT # | SIZES | A | B | C | D | E | INTERNAL CAPACITY (IN ³) |
|-------|--------|---------|----------|----------|----------|----------|--------------------------------------|
| C17SA | 1/2" | 5 7/16" | 1 13/32" | 1 13/32" | 1" | 3 3/16" | 4.8 |
| C27SA | 3/4" | 6 5/32" | 1 5/8" | 1 19/32" | 1 7/32" | 3 13/16" | 7.5 |
| C37SA | 1" | 7 7/32" | 1 7/8" | 1 3/4" | 1 3/8" | 4 9/16" | 11.8 |
| C47SA | 1 1/4" | 7 5/8" | 2 5/16" | 2 3/16" | 1 29/32" | 5 1/32" | 19.8 |
| C57SA | 1 1/2" | 8" | 2 9/16" | 2 7/16" | 2 1/16" | 5 7/16" | 27.8 |
| C67SA | 2" | 9 5/32" | 3 7/32" | 3 1/16" | 2 7/16" | 6 1/4" | 53.2 |



NOTES:

1. MATERIAL: CorroStall ALUMINUM ALLOY
2. FINISH: AS CAST
3. ALL DIMENSIONS $\pm 1/64$
4. CASE COVER MATERIAL: CorroStall ALUMINUM ALLOY
6. STAMPED ALUM. COVERS FURNISHED WITH ALUMINUM CLIPS AND BRACKETS
7. HARDWARE: STAINLESS STEEL
8. ALL CONDUIT BODIES AND COVERS ARE INTERCHANGEABLE WITH CROUSE HINDS, APPLETON, AND O.Z. GEDNEY BRAND FORM 7 CONDUIT BODIES

| | | | | | |
|---|--|---|---------------------|---------------|---------------------------|
| GENERAL NOTES | | Thomas & Betts A Member of the ABB Group | | | |
| 1. ALL DIMENSIONS ARE FOR REFERENCE ONLY. 2. DIMENSIONS IN BRACKETS [] ARE IN METRIC UNITS. | | | | | |
| REVISIONS | | DESCRIPTION: C STYLE FORM 7 SAND CAST ALUM. CONDUIT BODY | | | |
| 0 | SEE ERN (****) FOR APPROVAL SIGNATURES & RELEASE DATE. PROJECT NO: **** | ORIGINAL PROJECT NO / (ERN NO) 013D000116 / (2016673) | SHEET NO: 1 OF 1 | REV. NO: 0 | DRAWING NO: WSD-001032 |