

**SUSPENSION
BOLTED
ALUMINUM JUMPER LOOP CLAMP**

ALUMINUM



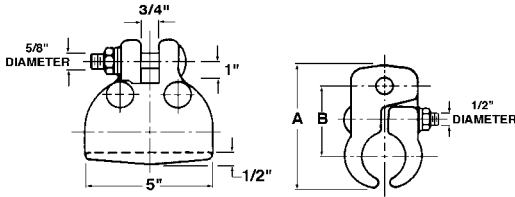
For the support of jumper loops on transmission lines.

A horizontal line post with two-hole blade end fitting is bolted to the tower and attached to the jumper loop as the illustration shows. Horizontal motion of the loop is completely restricted. Because the factor of wind sway is eliminated, length of the crossarm may be reduced. Saving in tower cost can be attractive, and improved construction results.

Position of the clamp relative to the insulator can be changed by bolting the clamp through the upper hole in the insulator end fitting.

Jumper loop clamps are not intended for tangent span application.

Material: Body—aluminum alloy
Hardware—galvanized steel



CATALOG NUMBER	RANGE OF CONDUCTOR SIZES—INCHES (MM)	ULTIMATE STR. LBS.—(KG)	DIMENSIONS INCHES (MM)		APPROX. WT. EACH LBS. (KG)
			A	B	
97642-3002	1.00-1.40 (25.40-35.56)	5,000 LBS. (2,268)	4-1/4 (107.95)	2-3/8 (60.33)	3.3 (1.50)
97642-3003	1.40-1.60 (35.56-40.64)	5,000 LBS. (2,268)	4-1/4 (107.95)	2-3/8 (60.33)	3.3 (1.50)
60064-3001	1.60-2.00 (40.64-50.80)	5,000 LBS. (2,268)	5-1/4 (133.35)	3 (76.20)	4.1 (1.86)

**SUSPENSION
ALUMINUM ANGLE CLAMP**

ALUMINUM
AAC

Intended for angle construction with all aluminum, ACSR or aluminum alloy conductor.

Material: Body and Keeper—356-T6 aluminum alloy
Hardware—galvanized steel
Cotter Pin—#302 stainless steel

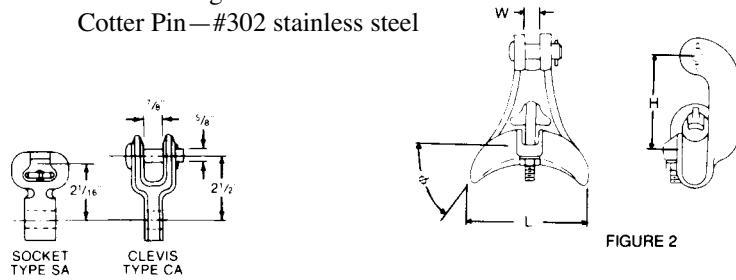
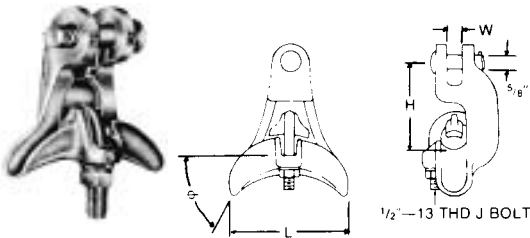


FIGURE 1

FIGURE 2

CATALOG NUMBER	FIG. NO.	CLAMPING RANGE INCHES (MM)	ULTIMATE BODY STRENGTH LBS. (KG)	MAX. TAKE-OFF ANGLE	DIMENSIONS INCHES (MM)				APPROX. WT. EACH LBS. (KG)
				o	L	W	H		
AAC-301	2	.198-.732 (5.03-18.59)	7,000 (3,175)	45°	4-1/4 (107.95)	11/16 (17.46)	2-7/8 (73.02)	1.25 (.57)	
AAC-302	1	.198-.732 (5.03-18.59)	7,000 (3,175)	45°	4-1/4 (107.95)	11/16 (17.46)	2-7/8 (73.02)	1.25 (.57)	
AAC-104-N	1	.50-1.10 (12.70-27.94)	12,000 (5,443)	60°	5-1/4 (133.35)	11/16 (17.46)	4-1/8 (104.77)	2.3 (1.04)	
AAC-104-90-N	2	.50-1.10 (12.70-27.94)	12,000 (5,443)	60°	5-1/4 (133.35)	11/16 (17.46)	4-1/8 (104.77)	2.2 (1)	

NOTES: (1) Sockets and clevises can be supplied by adding "S" or "C" to catalog number. Example, AAC-104-90-S.
(2) Recommended torque on bolts: 1/2"—480 in. lbs.