

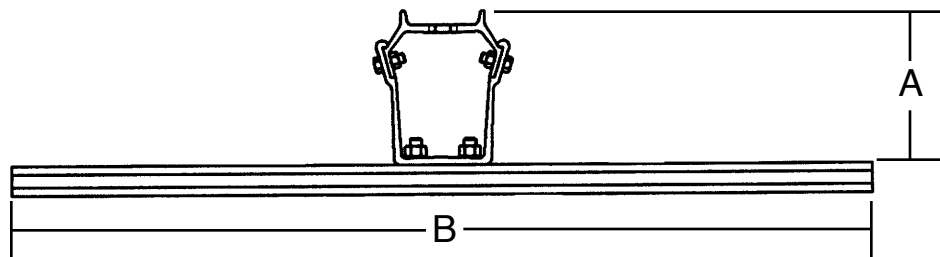


Conduit Standoff Brackets

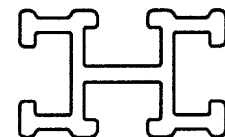


A multi-purpose bracket for mounting 1" through 6" conduit in a variety of ways. Bracket will mount up to four 6" conduits with unlimited adjustability. 4-Way T-Slot extrusion eliminates field drilling. Unit mounts to the pole on $3\frac{5}{8}$ " hole centers using $\frac{5}{8}$ " throbolt and $\frac{1}{2}$ " lag (not supplied). **Conduit straps are not included, order below.** Additional T-Slot Shapes are available on the following page.

| Catalog Number | Dimensional Data | | Weight each |
|----------------|------------------|-----|-------------|
| | A | B | |
| C6CSO12 | 6" | 12" | 4 lb. |
| C6CSO24 | 6" | 24" | 5 lb. |
| C6CSO36 | 6" | 36" | 6 lb. |
| C9CSO12 | 9" | 12" | 4 lb. |
| C9CSO24 | 9" | 24" | 5 lb. |
| C9CSO36 | 9" | 36" | 6 lb. |



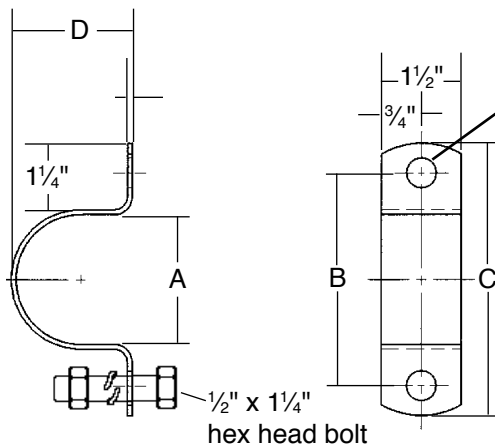
4-Way T-Slot



End View

Captures $\frac{1}{2}$ " bolt heads

Conduit Strap Kits



Strap kits with the following variations are available for use with the conduit standoff brackets above. The straps have two holes for mounting one conduit section. Each strap kit contains a strap, two each $\frac{1}{2}$ " x $\frac{1}{4}$ " hex head bolts, lockwashers and hex nuts.

| Conduit Size | Catalog No. | "A" Dim. | "B" Dim. | "C" Dim. | "D" Dim. | Weight |
|---------------------|-------------|-------------------|--------------------|--------------------|--------------------|---------|
| 1 inch | CSTK1 | $1\frac{3}{8}$ " | 3" | $4\frac{1}{8}$ " | $1\frac{1}{4}$ " | 0.3 lb. |
| $1\frac{1}{2}$ inch | CSTK15 | $1\frac{7}{8}$ " | $3\frac{1}{2}$ " | $4\frac{5}{8}$ " | $1\frac{7}{8}$ " | 0.4 lb. |
| 2 inch | CSTK2 | $2\frac{3}{8}$ " | $3\frac{15}{16}$ " | $5\frac{1}{16}$ " | $2\frac{1}{4}$ " | 0.5 lb. |
| $2\frac{1}{2}$ inch | CSTK25 | $2\frac{7}{8}$ " | $4\frac{7}{16}$ " | $5\frac{9}{16}$ " | $2\frac{3}{4}$ " | 0.6 lb. |
| 3 inch | CSTK3 | $3\frac{1}{2}$ " | $5\frac{1}{16}$ " | $6\frac{3}{16}$ " | $3\frac{3}{8}$ " | 0.6 lb. |
| $3\frac{1}{2}$ inch | CSTK35 | 4" | $5\frac{9}{16}$ " | $6\frac{11}{16}$ " | $3\frac{15}{16}$ " | 0.6 lb. |
| 4 inch | CSTK4 | $4\frac{1}{2}$ " | $6\frac{1}{16}$ " | $7\frac{3}{16}$ " | $5\frac{3}{8}$ " | 0.6 lb. |
| 5 inch | CSTK5 | $5\frac{9}{16}$ " | $7\frac{7}{8}$ " | 8" $\frac{1}{4}$ " | $5\frac{1}{2}$ " | 0.7 lb. |
| 6 inch | CSTK6 | $6\frac{5}{8}$ " | $8\frac{3}{8}$ " | $9\frac{5}{16}$ " | $6\frac{1}{2}$ " | 0.7 lb. |

Typical Installations

