

# MicroMax® NS

Serged Seams    Dry Particulate    Light Liquid Splash



## Microporous protection from dirt, grease, grime and light chemical splash!

This line of general purpose protective clothing can be used in work environments where hazardous or non-hazardous contaminants may be present. Very economical and lightweight, MicroMAX® NS features high MVTR and is breathable for worker comfort. MicroMAX® NS is strong, wet or dry, perfect for work environments where dirt, grime, splashes and spills are present.

### MicroMax® NS Physical Properties

Physical Property	Test Method	Units	Test Results
Basis Weight	ASTM D3776	oz/y <sup>2</sup>	1.55 oz/y <sup>2</sup>
Grab Tensile MD	ASTM D5034	lbs.	22.0 lbs.
Grab Tensile XD	ASTM D5034	lbs.	14.0 lbs.
Trapezoidal Tear MD	ASTM D1117	lbs.	9.0 lbs.
Trapezoidal Tear CD	ASTM D1117	lbs.	5.8 lbs.
Ball Burst	ASTM D3787	lbs.	19.0 lbs.
Air Permeability	ASTM D737	cfm	<0.562 cfm/ft <sup>2</sup>
Surface Resistivity	EN1149-5:2006	Ω	Pass

### MicroMax® NS ASTM F903 Penetration Data

Chemical Tested	Concentration %	Test Time – Minutes	Test Results
Diazinon	100%	60	Pass
Motor Oil-40 wt.	100%	60	Pass
Bleach-household	100%	60	Pass
Isocyanate Based Paint	100%	60	Pass
Sodium Hydroxide	50%	60	Pass
Sodium Hyperchlorite	10%	60	Pass
Blood	Challenge Fluid Liter – 3.20 x 10 <sup>8</sup> (PFU/mL)	Assay Results PFU/mL <1	Pass



**Labcoat CTL101**  
MicroMax® NS Lab Coat, snap closure, 2 pockets, long sleeve.  
Sizes: S – 5X  
Case Pack: 30



**Labcoat CTL140**  
MicroMax® NS Lab Coat, snap closure, no pockets, long sleeve.  
Sizes: S – 5X  
Case Pack: 30



**Shirt CTL201**  
MicroMax® NS Shirt, snap closure, long sleeves.  
Sizes: S – 5X  
Case Pack: 50



**Coverall CTL412**  
MicroMax® NS Coverall, zipper closure.  
Sizes: S – 5X  
Case Pack: 25



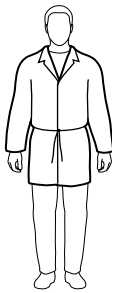
**Coverall CTL414**  
MicroMax® NS Coverall, zipper closure, attached hood, boots, elastic wrists.  
Sizes: S – 5X  
Case Pack: 25



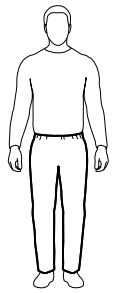
**Coverall CTL417**  
MicroMax® NS Coverall, zipper closure, elastic wrists and ankles.  
Sizes: S – 5X  
Case Pack: 25



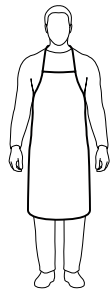
**Coverall CTL428**  
MicroMax® NS Coverall, zipper closure, attached hood, elastic wrists and ankles.  
Sizes: S – 5X  
Case Pack: 25



**Smock CTL501**  
MicroMax® NS Smock, long sleeves, attached ties.  
Sizes: S – 5X  
Case Pack: 50



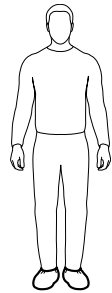
**Pants CTL301**  
MicroMax® NS Pants, elastic waist.  
Sizes: S – 5X  
Case Pack: 50



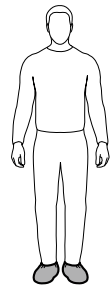
**Apron CTL601**  
MicroMax® NS Apron, sewn ties.  
Sizes: 28" w x 36" l  
Case Pack: 100



**Sleeve CTL850**  
MicroMax® NS Sleeve, elastic ends.  
Sizes: 18" length  
Case Pack: 100 pair



**Shoe Cover CTL901 / 901 NS**  
MicroMax® NS Shoe Cover, elastic ankles. Also available in gray non-skid version as Style 901NS.  
Sizes: S/M, L/XL, 2X  
Case Pack: 200 pair



**Boot Cover CTL903 / 903NS**  
MicroMax® NS Boot Cover, elastic top, 17" high. Also available in gray non-skid version as Style 903NS.  
Sizes: S/M, L/XL, 2X  
Case Pack: 200 pair