

Product data sheet

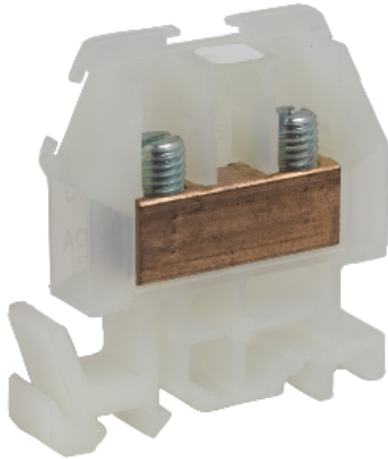
Characteristics

9080GR6

Product availability : Stock - Normally stocked in distribution facility



Price* : 2.40 USD



Main

Range of product	9080G
Product or component type	Terminal block
Product or component type	Terminal block standard
Color	Natural
Quantity per set	Set of 50

Complementary

System Voltage	600 V AC/DC
[In] rated current	60 A per: UL 60 A per: CSA
AWG gauge	AWG 22...AWG 8 (copper)
Mounting support	35 mm DIN rail 9080GH track
Product certifications	CE UL recognized E60616 CCN XCFR2 CSA file 62144 class 6228 01
Protection type	Fingersafe per: DIN 57470
Material	Nylon block
Electrical connection	Box lugs copper
Ambient air temperature for operation	-40...257 °F
Connections - terminals	Lug copper Tightening Torque: 18...20 lbf.in for: AWG 22...AWG 8 (copper)
Height	1.82 in
Width	1.72 in
Depth	0.35 in
Number of terminal blocks	34 per foot
Product compatibility	GM6B

Ordering and shipping details

Category	21702 - 9080 G (NOT GCB)
----------	--------------------------

Discount Schedule	CP5
GTIN	00785901000716
Nbr. of units in pkg.	50
Package weight(Lbs)	2.9999999999999999E-2
Returnability	Y
Country of origin	MX

Offer Sustainability

RoHS (date code: YYWW)	Compliant - since 0846 - Schneider Electric declaration of conformity Schneider Electric declaration of conformity
------------------------	---

Contractual warranty

Warranty period	18 months
-----------------	-----------