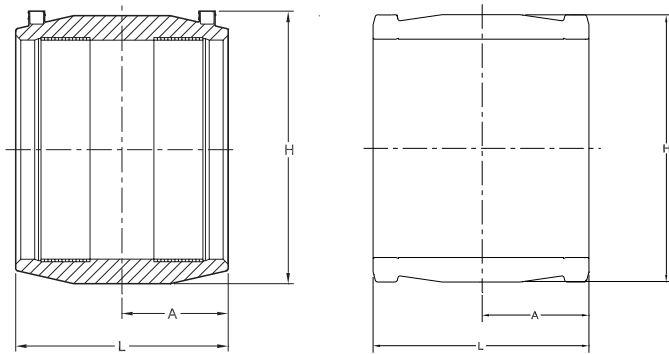


Electrofusion Fittings: Couplings

NOTE: Operating Pressure is 200 psi for PE4710 Couplings in allowable applications.



EF COUPLING DIMENSIONS

Nominal Size	H	L	A
½" CTS	2.01	3.15	1.57
½" IPS	2.15	2.98	1.42
¾" CTS	2.15	2.98	1.42
¾" IPS	2.48	3.46	1.73
1" CTS	2.52	3.46	1.73
1" IPS	2.63	3.46	1.73
1¼" CTS	2.56	3.30	1.57
*1¼" DUCT (CON.)	3.00	3.70	1.82
1¼" IPS	3.04	3.86	1.93
*1¼" SIDR 9 (CON.)	3.00	3.70	1.82
1½" IPS	3.36	4.33	2.17
2" IPS	3.78	4.72	2.36
2" CTS	3.59	4.37	2.12
2" IPS	3.82	4.31	2.09
2" IPS CONDUIT	3.55	4.32	2.09
2½" CONDUIT	4.17	4.25	2.06
3" IPS	5.18	5.59	2.72
4" IPS	6.51	6.14	3.00
4" DIPS	6.06	6.93	3.46
5" IPS	7.56	7.17	3.54
6" IPS	8.70	8.35	4.10
6" DIPS	8.74	8.19	4.09
7" IPS	8.93	8.19	4.09
8" IPS	11.20	9.48	4.70
8" DIPS	11.14	10.16	5.08
10" IPS	13.41	10.50	5.00
10" DIPS	13.70	10.90	5.50
12" IPS	15.84	11.50	5.50
12" DIPS	16.20	12.80	6.40

Call for availability of other sizes and dimensions.

* Industrial Non-Compliant ASTM Fittings.

** For Use with Bar-Code Processor Only

4.7R = 4.7 Pin with Resistor

4.7S = 4.7 Solid Pin

(PE2406/PE2708) ELECTROFUSION COUPLINGS

Size	Description	Pin Type	Part Number	Pack. Qty.	Wt.	CSA
½" CTS	ASTM D2513/F1055	4.7 R	5760001	50	0.12	YES
¾" CTS	ASTM D2513/F1055	4.7 R	5757042	40	0.12	-
1" CTS	ASTM D2513/F1055	4.7 R	5760005	25	0.19	YES
1¼" CTS	ASTM D2513/F1055	4.7 R	10001613	30	0.16	-
½" IPS	ASTM D2513/F1055	4.7 R	5757001	40	0.12	YES
¾" IPS	ASTM D2513/F1055	4.7 R	5760004	25	0.16	YES
1" IPS	ASTM D2513/F1055	4.7 R	5760006	25	0.13	YES
1¼" IPS	ASTM D2513/F1055	4.7 R	5760008	50	0.23	YES
1½" IPS	ASTM D2513/F1055	4.7 R	5760010	35	0.41	YES
2" IPS	ASTM D2513/F1055	4.7 R	5760012	25	0.38	YES
3" IPS	ASTM D2513/F1055	4.7 R	5757007	36	1.15	YES
4" IPS	ASTM D2513/F1055	4.7 R	5757008	10	1.57	YES
6" IPS	ASTM D2513/F1055	4.7 R	5757009	8	4.37	YES
8" IPS	ASTM D2513/F1055	4.7 R	5757010	4	8.43	YES