

### UNITAP™ Clear Insulated Multi-Tap

#### UL Listed 486A-486B

UNITAP™ Clear Insulated Multi-Tap is UL Listed to the UL Wire Connector Standard UL486A-486B and CSA Certified for use with flexible (fine stranded) conductor - with no ferrules required! Featuring color coordinated conductor port and screw port caps making it easy to identify the maximum conductor size accommodated by the connector.

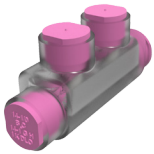
A disc-pad screw has also been incorporated to prevent damage to the fine strands as the conductor is compressed during installation. The connectors are shipped with the 'pad' attached to the screw by a thin stem; during installation the pad is sheared from the stem as it makes contact with the conductor and remains stationary as the screw continues to rotate until the recommended installation torque is achieved.

The color coordinated conductor port caps display the wire range and classes of conductor accepted by the specific connector. The screw port caps show the installation torque information for quick and easy reference during installation.



#### Features & Benefits

- 600 Volt Rated
- Fully Insulated Aluminum 6061-T6 connector body saves time and lowers installation costs by eliminating the need for taping
- Listed to UL486A-B (File E9498)
- CSA Certified to C22.2, No. 65 (File 042860\_c\_00)
- Rated for use with flex conductor (No Ferrules Required!)
- AL9CU dual rated for use with copper and aluminum conductors
- Range taking designs will accommodate wire sizes from #14-750 kcmil Class B & C, and #14-535 DLO Flex
- Configurations include Taps, In-Line Splice Reducers, Single-Sided Entry, and Double-Sided Entry with the number of ports from 2 to 14
- Clear Plastisol Insulation allows visual confirmation that conductor is properly inserted into port
- Operating temperature from -40°C to 135°C
- Conductor ports are pre-filled with oxide inhibitor
- Screw Port and Conductor Port caps provided to protect against contamination and accidental contact of energized parts
- Caps are color coordinated to quickly identify maximum conductor size accommodated
- Screw Port caps contain recommended installation torque values for quick and easy reference
- Conductor Port caps contain the accommodated wire range and allowable conductor classes



In-Line Splice Reducer

Figure 1



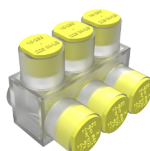
Tap - Opposite Side Entry

Figure 2



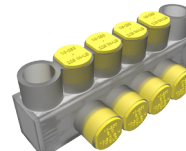
Tap - Same Side Entry

Figure 3



Multiple Port Tap Single Sided Entry

Figure 4



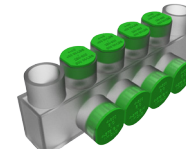
Multiple Port Mounted Tap Single Sided Entry

Figure 6



Multiple Port Tap Double Sided Entry

Figure 5



Multiple Port Mounted Tap Double Sided Entry

Figure 7

**UNITAP™**

(Continued)

Wire Range (AWG/kcmil)	Amp Rating	# of Ports	Configuration	Size (inches)			Hex Key	Catalog Number	Cap Color	Fig. #
				Length	Width	Height				
#14-#4 Class B & C #14-#6 Class G,H,I,K, DLO	95 A	2	Tap - Opposite Side Entry	1.08	1.50	1.25	1/8	<b>BITO4FX</b>	Brown	2
		2	Tap - Same Side Entry	1.08	1.16	1.25	1/8	<b>BIT4FX</b>	Brown	3
		3	Single Sided Entry	1.51	1.16	1.25	1/8	<b>BIBS43FX</b>	Brown	4
		4		1.95				<b>BIBS44FX</b>		
		5		2.39				<b>BIBS45FX</b>		
		6		2.83				<b>BIBS46FX</b>		
		8	3.71	<b>BIBS48FX</b>						
		2	Double Sided Entry	1.08	1.50	1.25	1/8	<b>BIBD42FX</b>	Brown	5
		3		1.51				<b>BIBD43FX</b>		
		4		1.95				<b>BIBD44FX</b>		
		5		2.39				<b>BIBD45FX</b>		
		6		2.83				<b>BIBD46FX</b>		
		8		3.71				<b>BIBD48FX</b>		
		#14-#2 Class B & C #14-#2 Class G,H,I,K, DLO	130 A	2	In-Line Splice Reducer	2.38	0.75	1.22	5/32	<b>BISR2FX</b>
#14-1/0 Class B & C #14-#1 Class G,H,I,K, DLO	170 A	2	In-Line Splice Reducer	2.91	0.75	1.22	5/32	<b>BISR1/0FX</b>	Pink	1
#14-2/0 Class B & C #14-#1 Class G,H,I,K, DLO	195 A	2	Tap - Opposite Side Entry	1.52	1.56	1.38	3/16	<b>BITO2/0FX</b>	Black	2
		2	Tap - Same Side Entry	1.52	1.40	1.38	3/16	<b>BIT2/0FX</b>	Black	3
		3	Single Sided Entry	2.19	1.31	1.38	3/16	<b>BIBS2/03FX</b>	Black	4
		4		2.86				<b>BIBS2/04FX</b>		
		5		3.53				<b>BIBS2/05FX</b>		
		6		4.20				<b>BIBS2/06FX</b>		
		8		5.55				<b>BIBS2/08FX</b>		
		10		6.89				<b>BIBS2/010FX</b>		
		12		8.24				<b>BIBS2/012FX</b>		
		14		9.58				<b>BIBS2/014FX</b>		
		2	Double Sided Entry	1.52	1.56	1.38	3/16	<b>BIBD2/02FX</b>	Black	5
		3		2.19				<b>BIBD2/03FX</b>		
		4		2.86				<b>BIBD2/04FX</b>		
		5		3.53				<b>BIBD2/05FX</b>		
		6		4.20				<b>BIBD2/06FX</b>		
		8		5.55				<b>BIBD2/08FX</b>		
		10		6.89				<b>BIBD2/010FX</b>		
		12		8.24				<b>BIBD2/012FX</b>		
14	9.58	<b>BIBD2/014FX</b>								

(Continued)

Wire Range (AWG/kcmil)	Amp Rating	# of Ports	Configuration	Size (inches)			Hex Key	Catalog Number	Cap Color	Fig. #					
				Length	Width	Height									
#14-2/0 Class B & C #14-#1 Class G,H,I,K, DLO	195 A	4	Mountable Single Sided Entry	4.20	1.25	1.50	3/16	BIBS2/04FXMT	Black	6					
		6		5.55				BIBS2/06FXMT							
		8		6.89				BIBS2/08FXMT							
		10		8.24				BIBS2/010FXMT							
		12		9.58				BIBS2/012FXMT							
		4	Mountable Double Sided Entry	4.20	1.56	1.50	3/16	BIBD2/04FXMT	Black	7					
		8		6.89				BIBD2/08FXMT							
		10		8.24				BIBD2/010FXMT							
		12		9.58				BIBD2/012FXMT							
#10-250 Class B & C #10-3/0 Class G,H,I,K, DLO	290 A	2	Tap - Opposite Side Entry	2.03	2.64	2.13	5/16	BITO250FX	Yellow	2					
		2	Tap - Same Side Entry	2.03	2.07	2.13	5/16	BIT250FX	Yellow	3					
		2	In-Line Splice Reducer	4.01	1.19	2.10	5/16	BISR250FX	Yellow	1					
		3	Single Sided Entry	2.97	2.07	2.13	5/16	BIBS2503FX	Yellow	4					
		4		3.91				BIBS2504FX							
		5		4.84				BIBS2505FX							
		6		5.78				BIBS2506FX							
		8		7.66				BIBS2508FX							
		10		9.53				BIBS25010FX							
		12		11.41				BIBS25012FX							
		14		13.29				BIBS25014FX							
		#10-250 Class B & C #10-3/0 Class G,H,I,K, DLO		290 A				2			Double Sided Entry	2.03	2.64	2.13	5/16
3	2.97		BIBD2503FX												
4	3.91		BIBD2504FX												
5	4.84		BIBD2505FX												
6	5.78		BIBD2506FX												
8	7.66		BIBD2508FX												
10	9.53		BIBD25010FX												
12	11.41		BIBD25012FX												
14	13.29		BIBD25014FX												
4	Mountable Single Sided Entry		5.78		1.95	2.63	5/16	BIBS2504FXMT	Yellow	6					
6			7.65					BIBS2506FXMT							
8			9.53					BIBS2508FXMT							
10			11.41					BIBS25010FXMT							
12			13.29					BIBS25012FXMT							
4	Mountable Double Sided Entry		5.78		2.64	2.63	5/16	BIBD2504FXMT	Yellow	7					
6			7.65					BIBS2506FXMT							
8			9.53					BIBD2508FXMT							
10			11.41					BIBD25010FXMT							
12			13.29					BIBD25012FXMT							

**UNITAP™**

(Continued)

Wire Range (AWG/kcmil)	Amp Rating	# of Ports	Configuration	Size (inches)			Hex Key	Catalog Number	Cap Color	Fig. #		
				Length	Width	Height						
#10-350 Class B & C #10-250 Class G,H,I,K, DLO	350 A	2	Tap - Opposite Side Entry	2.22	3.00	2.50	5/16	<b>BITO350FX</b>	Red	2		
		2	Tap - Same Side Entry	2.22	2.32	2.50	5/16	<b>BIT350FX</b>	Red	3		
		2	In-Line Splice Reducer	4.63	1.34	2.35	5/16	<b>BISR350FX</b>	Red	1		
		3	Single Sided Entry	3.13	2.32	2.50	5/16	<b>BIBS3503FX</b>	Red	4		
		4		4.04				<b>BIBS3504FX</b>				
		5		4.95				<b>BIBS3505FX</b>				
		6		5.86				<b>BIBS3506FX</b>				
		8		7.68				<b>BIBS3508FX</b>				
		10		9.50				<b>BIBS35010FX</b>				
		12		11.32				<b>BIBS35012FX</b>				
		14		13.14				<b>BIBS35014FX</b>				
		2	Double Sided Entry	3.13	3.00	2.50	5/16	<b>BIBD3502FX</b>	Red	5		
		3		4.04				<b>BIBD3503FX</b>				
		4		4.95				<b>BIBD3504FX</b>				
		5		5.86				<b>BIBD3505FX</b>				
		6		7.68				<b>BIBD3506FX</b>				
		8		9.50				<b>BIBD3508FX</b>				
		10		11.32				<b>BIBD35010FX</b>				
		12		13.14				<b>BIBD35012FX</b>				
		4	Mountable Single Sided Entry	5.86	2.32	2.63	5/16	<b>BIBS3504FXMT</b>	Red	6		
		6		7.68				<b>BIBS3506FXMT</b>				
		8		9.50				<b>BIBS3508FXMT</b>				
		10		11.32				<b>BIBS35010FXMT</b>				
		12		13.14				<b>BIBS35012FXMT</b>				
		4	Mountable Double Sided Entry	5.86	3.00	2.63	5/16	<b>BIBD3504FXMT</b>	Red	7		
		6		7.68				<b>BIBD3506FXMT</b>				
		8		9.50				<b>BIBD3508FXMT</b>				
		10		11.32				<b>BIBD35010FXMT</b>				
		12		13.14				<b>BIBD35012FXMT</b>				
		#6-500 Class B & C #6-373 Class G,H,I,K, DLO	430 A	2	In-Line Splice Reducer	5.00	1.62	2.62	3/8	<b>BISR500FX</b>	Brown	1
		#4-600 Class B & C #4-373 Class G,H,I,K, DLO	475 A	2	Tap - Opposite Side Entry	2.72	3.00	2.75	3/8	<b>BITO600FX</b>	Green	2
				2	Tap - Same Side Entry	2.72	2.38	2.75	3/8	<b>BIT600FX</b>	Green	3
3	Single Sided Entry			4.00	2.38	2.75	3/8	<b>BIBS6003FX</b>	Green	4		
4				5.28				<b>BIBS6004FX</b>				
5				6.56				<b>BIBS6005FX</b>				
6				7.84				<b>BIBS6006FX</b>				

(Continued)

Wire Range (AWG/kcmil)	Amp Rating	# of Ports	Configuration	Size (inches)			Hex Key	Catalog Number	Cap Color	Fig. #						
				Length	Width	Height										
#4-600 Class B & C #4-373 Class G,H,I,K, DLO	475 A	8	Single Sided Entry	10.41	2.38	2.75	3/8	BIBS6008FX	Green	4						
		10		12.97				BIBS60010FX								
		12		15.53				BIBS60012FX								
		14		18.09				BIBS60014FX								
		2	Double Sided Entry	2.72	3.00	2.75	3/8	BIBD6002FX	Green	5						
		3		4.00				BIBD6003FX								
		4		5.28				BIBD6004FX								
		5		6.56				BIBD6005FX								
		6		7.84				BIBD6006FX								
		8		10.41				BIBD6008FX								
		10		12.97				BIBD60010FX								
		12		15.53				BIBD60012FX								
		14		18.09				BIBD60014FX								
		4		Mountable Single Sided Entry				5.53			2.25	2.88	3/8	BIBS6004FXMT	Green	6
		6						7.40						BIBS6006FXMT		
		8						9.28						BIBS6008FXMT		
		12	13.03		BIBS60012FXMT											
		4	Mountable Double Sided Entry	5.53	3.00	2.88	3/8	BIBD6004FXMT	Green	7						
		6		7.40				BIBD6006FXMT								
		8		9.28				BIBD6008FXMT								
		10		11.16				BIBD60010FXMT								
		12	13.03	BIBD60012FXMT												
		#2-750 Class B & C #2-535 Class G,H,I,K, DLO	535 A	2	Tap - Opposite Side Entry	2.87	3.38	3.00	3/8	BITO750FX <sup>1</sup>	Black	2				
				2	Tap - Same Side Entry	2.87	2.70	3.00	3/8	BIT750FX <sup>1</sup>	Black	3				
				3	Single Sided Entry	4.00	2.70	3.00	3/8	BIBS7503FX <sup>1</sup>	Black	4				
				4		5.38				BIBS7504FX <sup>1</sup>						
				6		8.13				BIBS7506FX <sup>1</sup>						
				8		10.88				BIBS7508FX <sup>1</sup>						
10	13.63			BIBS75010FX <sup>1</sup>												
12	16.38			BIBS75012FX <sup>1</sup>												
14	19.13			BIBS75014FX <sup>1</sup>												
2	Double Sided Entry			2.87	3.38	3.00	3/8	BIBD7502FX <sup>1</sup>	Black	5						
3				4.25				BIBD7503FX <sup>1</sup>								
4				5.63				BIBD7504FX <sup>1</sup>								
6				8.37				BIBD7506FX <sup>1</sup>								
8				11.13				BIBD7508FX <sup>1</sup>								
10		13.87	BIBD75010FX <sup>1</sup>													
12		16.63	BIBD75012FX <sup>1</sup>													
14		19.37	BIBD75014FX <sup>1</sup>													

Notes:

<sup>1</sup> NOT UL Listed