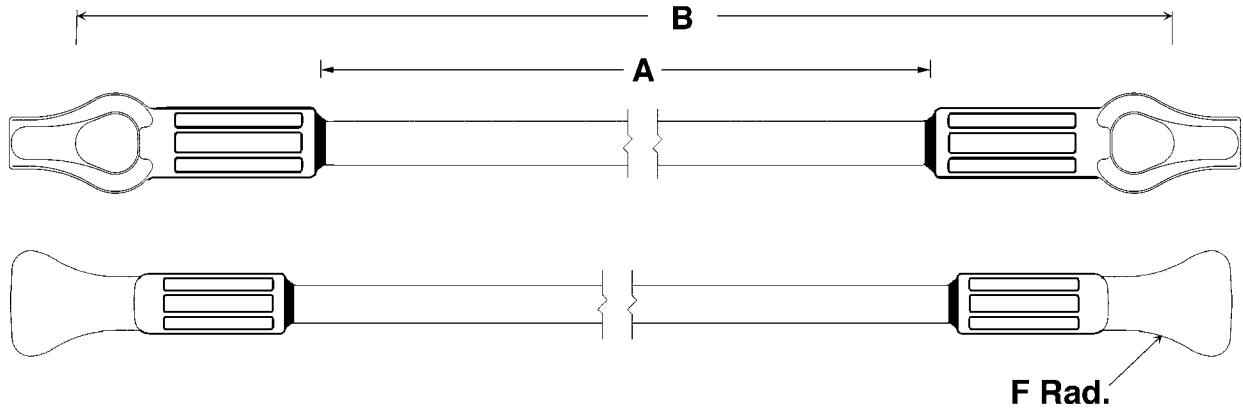


Guy Strains - Thimble / Thimble



Castings are hot-dip galvanized ductile iron.

Catalog Number	Length A	Length B	Radius F	Weight (Each)
16,000 lbs. (7258 kg) Minimum Ultimate Strength - 5/8" (16 mm) Dia. Rod				
GS16012TT	12" (30.5 cm)	19.2" (48.8 cm)	0.75" (19 mm)	2.8 lbs. (1.3 kg)
GS16018TT	18" (45.7 cm)	25.2" (64 cm)	0.75" (19 mm)	2.9 lbs. (1.3 kg)
GS16036TT	36" (91.4 cm)	43.2" (109.7 cm)	0.75" (19 mm)	3.3 lbs. (1.5 kg)
GS16042TT	42" (106.7 cm)	49.2" (125 cm)	0.75" (19 mm)	3.4 lbs. (1.5 kg)
GS16054TT	54" (137.2 cm)	61.2" (155.4 cm)	0.75" (19 mm)	3.7 lbs. (1.7 kg)
GS16078TT	78" (198.1 cm)	85.2" (216.4 cm)	0.75" (19 mm)	4.2 lbs. (1.9 kg)
21,000 lbs. (9525 kg) Minimum Ultimate Strength - 3/4" (19 mm) Dia. Rod				
GS21012TT	12" (30.5 cm)	19.4" (49.3 cm)	0.88" (22 mm)	4.4 lbs. (2.0 kg)
GS21018TT	18" (45.7 cm)	25.4" (64.5 cm)	0.88" (22 mm)	4.6 lbs. (2.1 kg)
GS21036TT	36" (91.4 cm)	43.4" (110.2 cm)	0.88" (22 mm)	5.1 lbs. (2.3 kg)
GS21042TT	42" (106.7 cm)	49.4" (125.5 cm)	0.88" (22 mm)	5.3 lbs. (2.4 kg)
GS21078TT	78" (198.1 cm)	85.4" (216.9 cm)	0.88" (22 mm)	6.4 lbs. (2.9 kg)

Consult factory for additional lengths.