

SUBSTATION CONNECTORS



S12

TERMINALS BRONZE BOLTED CABLE TERMINAL ADAPTER TRANSFORMER TERMINAL TO MULTIPLE CABLE

BRONZE
V

Bronze terminal adapter for connecting two, three or four copper cables to NEMA secondary transformer terminals.

Materials: Casting—bronze alloy
Eyebolt—high strength bronze

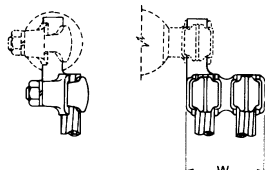
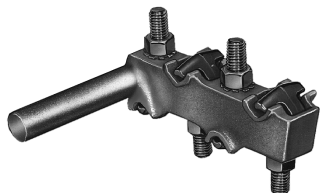


FIG. 1

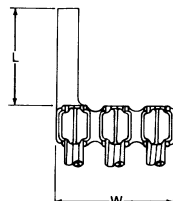


FIG. 2

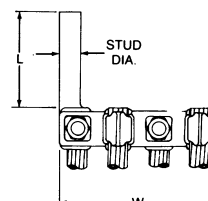


FIG. 3

CATALOG NUMBER	FIG. NO.	TRANSFORMER TERMINAL		STUD DIA.	COPPER CONDUCTOR RANGE		DIMENSIONS INCHES (MM)		APPROX. WT. EACH LBS. (KG)
		EYEBOLT OPENING	CONDUCTOR RANGE		CABLE	DIA.	L	W	
V2-33	1	7/16	#8 Sol.-2/0 Str.	3/8	#8 Sol.-2/0 Sol.	.128-.365 (3.25-9.27)	1-3/4 (44.45)	2 (50.8)	.42 (.19)
V2-43	1	5/8	#6 Sol.-4/0 Str.	9/16	#6 Sol.-250 MCM	.162-.574 (4.11-14.58)	2 (50.8)	2-5/8 (66.68)	.94 (.43)
V2-53	1	13/16	#2 Sol.-350 MCM	11/16	#2 Sol.-350 MCM	.255-.681 (6.48-17.30)	2-1/2 (63.5)	3-1/8 (79.38)	1.4 (.64)
V2-63	1	15/16	1/0 Sol.-500 MCM	27/32	1/0 Sol.-500 MCM	.321-.813 (8.15-20.65)	3-3/4 (95.25)	3-3/4 (95.25)	2.1 (.95)
V3-33	2	7/16	#8 Sol.-2/0 Str.	3/8	#8 Sol.-2/0 Sol.	.128-.365 (3.25-9.27)	1-3/4 (44.45)	3 (76.2)	.64 (.29)
V3-43	2	5/8	#6 Sol.-4/0 Str.	9/16	#6 Sol.-250 MCM	.162-.574 (4.11-14.58)	2 (50.8)	3-7/8 (98.42)	1.3 (.59)
V3-53	2	13/16	#2 Sol.-350 MCM	11/16	#2 Sol.-350 MCM	.255-.681 (6.48-17.30)	2-1/2 (63.5)	4-3/4 (120.65)	1.9 (.86)
V3-63	2	15/16	1/0 Sol.-500 MCM	27/32	1/0 Sol.-500 MCM	.321-.813 (8.15-20.65)	3-3/4 (95.25)	5-5/8 (142.88)	2.9 (1.32)
V3-89	2	1-1/4	2/0 Sol.-1000 MCM	1-5/32	2/0 Sol.-1000 MCM	.361-1.152 (9.17-29.26)	4-1/2 (114.3)	6 (152.4)	4.8 (2.18)
V4-33	3	7/16	#8 Sol.-2/0 Str.	3/8	#8 Sol.-2/0 Sol.	.128-.365 (3.25-9.27)	1-3/4 (44.45)	4 (101.6)	1.0 (.45)
V4-43	3	5/8	#6 Sol.-4/0 Str.	9/16	#6 Sol.-250MCM	.162-.574 (4.11-14.58)	2 (50.8)	5 (127.0)	1.7 (.77)
V4-53	3	13/16	#2 Sol.-350 MCM	11/16	#2 Sol.-350 MCM	.255-.681 (6.48-17.30)	2-1/2 (63.5)	5 5/8 (142.88)	2.2 (1.0)
V4-63	3	15/16	1/0 Sol.-500 MCM	27/32	1/0 Sol.-500 MCM	.321-.813 (8.15-20.65)	3-3/4 (95.25)	6-5/8 (168.28)	3.3 (1.50)

SA-22