

# Emergency Stops and Enabling Switches

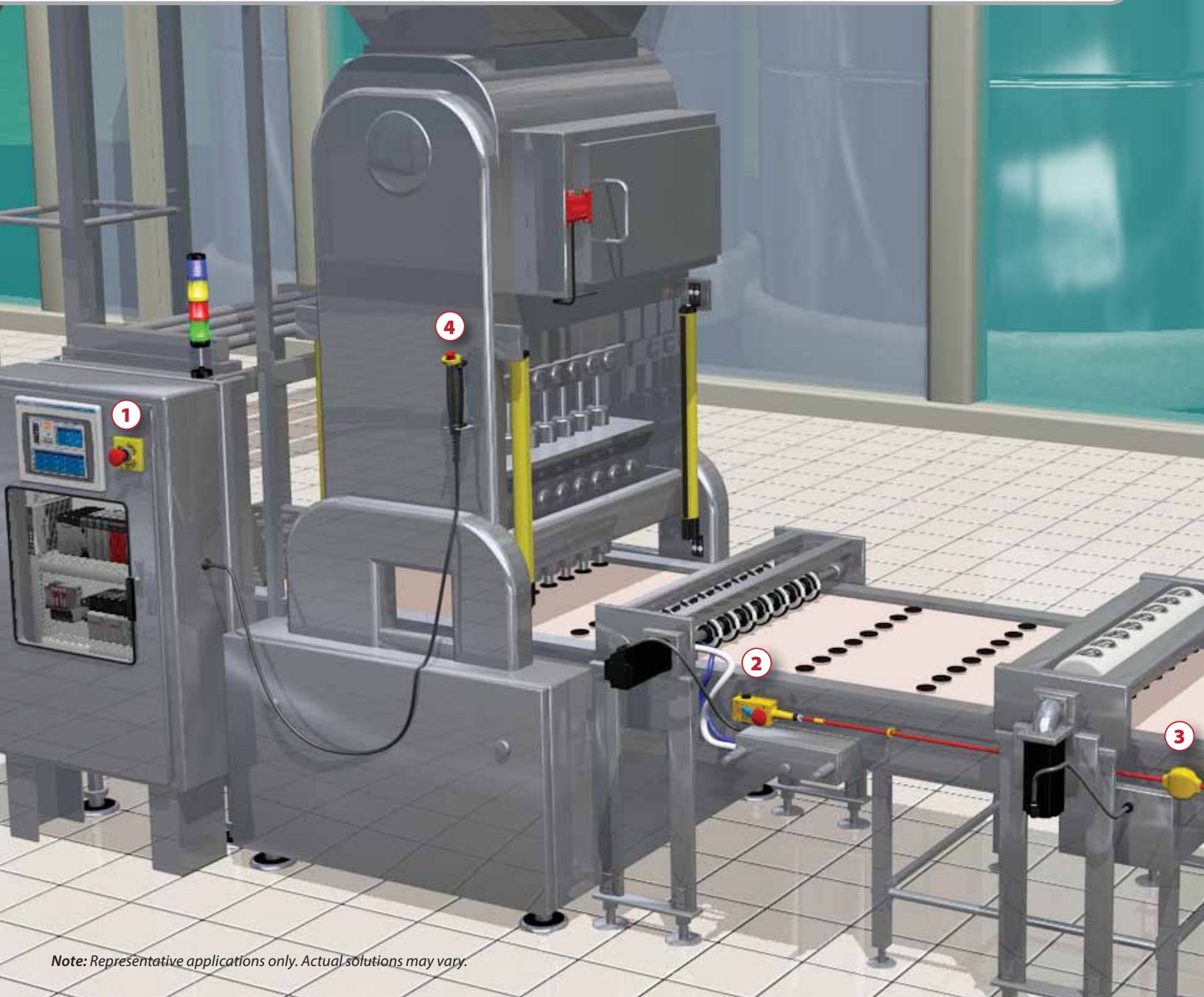
A Fundamental Requirement for Emergency Situations



LISTEN.  
THINK.  
SOLVE.

# Emergency Stop and Enabling Switch Applications

Rockwell Automation® safety products and solutions improve the functional operation of your machinery while helping to increase personnel safety, efficiency and productivity. We offer one of the broadest safety portfolios in the industry to help you achieve both safety and productivity goals in process and discrete manufacturing applications.



*Note: Representative applications only. Actual solutions may vary.*

## Other Rockwell Automation safety products...



Safety light curtains, camera and scanners



Pressure sensitive devices



GuardLogix and Compact GuardLogix



SmartGuard 600



Our safety portfolio includes a variety of Allen-Bradley® emergency stop devices and enabling switches that help ensure safe working conditions for personnel. These critical components provide high quality and reliability for your machine and process safety applications.

## 1 E-Stop

- Equipped with an anti-tease mechanism, providing more reliable operation
- 22.5 mm and 30.5 mm mounting holes
- Options include actuator sizes, illuminated or non-illuminated and with or without key operation
- Patented self-monitoring contact block initiates a stop command when separated from the operator

## 2 Cable Pull Switch

- Installed along or around awkward machinery such as conveyors
- Emergency stop capabilities on spans of up to 125 m
- Combination of cable pull and integrated e-stop push button (optional) provides emergency stop capability along the entire span of the cable

## 3 Lifeline Rope Tensioner System

To aid simple installation, the Lifeline Rope Tensioner System, a unique cable (rope) tensioning system is available. Other methods of installation can be time consuming and awkward. With the Lifeline Rope Tensioner System, setup takes ONLY 3 minutes – up to a 90% reduction from installations using another tensioner system.

## 4 Enabling Switch

- Allows personnel to enter dangerous areas while controlling hazardous machine functions
- Hand-held three-position switch, ideal for use in robot cells during maintenance, troubleshooting, programming and testing
- Optional jog function and e-stop push button provide extended functionality



Safety relays and configurable safety relays



Variable speed and servo drives



Safety contactors



Tongue and hinge switches

# Product Spotlight



## Stainless Steel Lifeline™ 4 without E-Stop Button

Lifeline 4 stainless steel cable pull switches are made from stainless steel 316 and are suitable for applications with strict hygiene requirements. The full stainless construction and elimination of the plastic E-stop button make this switch ideal for food & beverage and other harsh industrial applications.

- IP69K enclosure rating
- Stainless steel 316
- Up to 75 m (264 ft) span



### Built to Last

*Lifeline 4 stainless steel cable pull switches are the only investment cast stainless steel cable pull switch on the market.*

## Cable Pull Switches (Bulletin 440E)

Lifeline cable pull switches can be installed along or around awkward machinery and provide a constant-access emergency stop.

- ISO 13850, IEC 60204-1 and NFPA 79 compliant
- Universal mounting and operation
- Cable-status indicator on switch lid
- Switch latches on cable pull and cable slack conditions
- Quick-disconnect styles available



### Lifeline 4

- Switches up to 125 m (410 ft) span
- Lid-mounted emergency stop push button



### Lifeline 3

- Switches up to 30 m (98 ft) span
- Industry standard fixing centers to DIN/EN 50041



### Lifeline 4 Stainless Steel

- Switches up to 75 m (246 ft) span
- Lid-mounted emergency stop push button
- Made of stainless steel 316
- Available with or without e-stop push button

## Lifeline Rope Tensioner System for Lifeline Cable Pull Switches

The Lifeline Rope Tensioner System is a unique cable (rope) tensioning system that enables quicker installation of cable actuated systems.

- Unique cable grip system
- Can be installed and commissioned in approximately three minutes
- Ease of installation using typical tools
- Up to 300 mm (11.8 in.) of cable adjustment
- Built-in cable management incorporated into cable grips



## Enabling Switches (Bulletin 440J)

Our three-position enabling switch can be used to allow personnel access to dangerous areas while controlling hazardous machine functions. When squeezed or released, a stop signal is issued, which is used to protect the person.

- Three-position enabling switches
- Lightweight and ergonomic
- Optional jog and e-stop push buttons



To find out more about all our cable pull devices and enabling switches, visit <http://ab.rockwellautomation.com/Push-Buttons/Emergency-Operators>

# Product Spotlight

## Bulletin 800T/H Trigger Action E-Stop Devices

The Allen-Bradley 800T/H push button product lines are designed and constructed to perform consistently in the most demanding industrial environments. This legacy of leadership continues with the introduction of the innovative 800T/H trigger action e-stop devices.



Trigger Action E-Stop Units, Non-Illuminated



Trigger Action E-Stop Units, Illuminated



Trigger Action E-Stop Units, Key Release

### Achieve Certification Standards

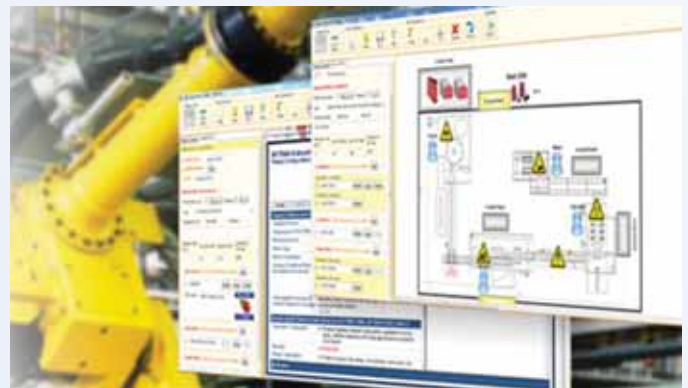
*800T/H trigger action emergency stop operators are UL Category NISD certified as emergency stop devices, helping you and your customers to achieve certification goals.*

## Safety Automation Builder

Facilitates safety system design while simplifying development, improving compliance and reducing cost.

- Lay out machine hazards and access points
- Define safety functions and select safety products for each
- Export data to SISTEMA for analysis\*
- Direct integration to ProposalWorks™ for complete BOMs

\* SAB and SISTEMA tools must be used in conjunction with each other to provide this output.



To learn more about Safety Automation Builder or to download, visit [http://discover.rockwellautomation.com/SFTY\\_EN\\_safety\\_automation\\_builder.aspx](http://discover.rockwellautomation.com/SFTY_EN_safety_automation_builder.aspx)



To find out more about all our push buttons, including e-stops, visit <http://ab.rockwellautomation.com/Push-Buttons-and-Signaling-Devices>

## Bulletin 800T/H

The 30 mm Bulletin 800T and 800H device product line is designed and constructed to perform in the most demanding industrial environments.



### Standard

- 30.5 mm mounting hole
- Type 4/13 watertight/oiltight (Bulletin 800T)
- Type 4/4X/13 corrosion-resistant/watertight/oiltight (Bulletin 800H)
- Heavy industrial stations and operators
- Universal LED for simplified product selection and increased flexibility



### Trigger Action

All the features of the standard Bulletin 800T/H, as well as:

- Fixed mushroom cap for tamper resistance
- Trigger action and twist release functions prevent unintentional action



## Bulletin 800F

We use state-of-the-art solid modeling techniques and finite element analysis so that every component built into Bulletin 800F push buttons is optimized for durability and performance.



- 22.5 mm mounting hole
- IP65/66, Type 4/4X/13 (plastic) and Type 4/13 (metal)
- Engineering grade thermoplastics
- Chemical-resistant for harsh environments
- Die-cast metal construction
- Chrome-plated



## Bulletin 800G Hazardous Location

Bulletin 800G hazardous location push buttons offer the flexibility of an interchangeable base and panel mount devices, reducing inventory.

- IP66, Type 4X
- Class I, Zone 1 and Zone 2
- Class I/Division 2 – Groups A, B, C, and D





### Safety Technology

Discover more ways Rockwell Automation can help you achieve your safety goals.

[www.rockwellautomation.com/rockwellautomation/products-technologies/safety-technology/overview.page](http://www.rockwellautomation.com/rockwellautomation/products-technologies/safety-technology/overview.page)



### On-Line Product Directory

Our extensive product portfolio is designed to improve your processes through every stage of your manufacturing cycle.

[www.rockwellautomation.com/go/lit/products](http://www.rockwellautomation.com/go/lit/products)



### Product Selection Toolbox

Our powerful range of product selection and system configuration tools assist you in choosing and applying our products.

[www.rockwellautomation.com/go/lit/pst](http://www.rockwellautomation.com/go/lit/pst)



**Our innovative safety products and solutions improve the functional operation of your machinery while helping to increase personnel safety, efficiency and productivity. Our safety portfolio includes:**

- Connection Devices
- Drives and motors
- Input/Output (I/O) Modules
- Motion Control / Motor Control
- Programmable Controllers and Safety PLCs
- Push Buttons and Signaling Devices
- Relays and Timers

Rockwell Automation, Inc. (NYSE:ROK), the world's largest company dedicated to industrial automation, makes its customers more productive and the world more sustainable. Throughout the world, our flagship Allen-Bradley® and Rockwell Software® product brands are recognized for innovation and excellence.



Allen-Bradley, Guardmaster, Lifeline, Listen. Think. Solve., ProposalWorks, Rockwell Automation and Rockwell Software are trademarks of Rockwell Automation, Inc. Trademarks not belonging to Rockwell Automation are property of their respective companies.

**[www.rockwellautomation.com](http://www.rockwellautomation.com)**

#### Power, Control and Information Solutions Headquarters

Americas: Rockwell Automation, 1201 South Second Street, Milwaukee, WI 53204-2496 USA, Tel: (1) 414.382.2000, Fax: (1) 414.382.4444

Europe/Middle East/Africa: Rockwell Automation NV, Pegasus Park, De Kleetlaan 12a, 1831 Diegem, Belgium, Tel: (32) 2 663 0600, Fax: (32) 2 663 0640

Asia Pacific: Rockwell Automation, Level 14, Core F, Cyberport 3, 100 Cyberport Road, Hong Kong, Tel: (852) 2887 4788, Fax: (852) 2508 1846