

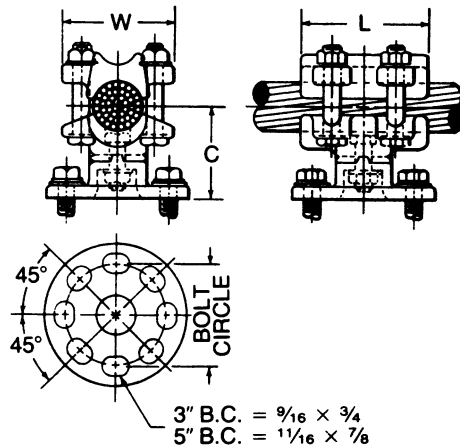
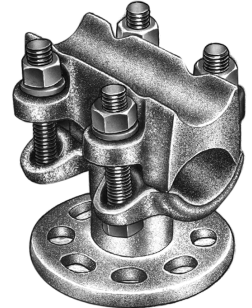
BUS SUPPORTS ALUMINUM CABLE TO INSULATOR

ALUMINUM
ACS

Aluminum alloy bus support for aluminum cable. Clamping bolts have hex-stops for one-wrench installation.

Cap screws are supplied for upright mounting.

Material: Castings—356-T6 aluminum alloy
Clamping hardware—aluminum alloy
Mounting hardware—galvanized steel.



CATALOG NUMBER	CABLE RANGE		CABLE DIAMETER (MM)		BOLT CIRCLE DIA.	DIMENSIONS INCHES (MM)			APPROX. WT. EACH LBS. (KG)
	AAC	ACSR	SMALL GROOVE	LARGE GROOVE		L	C	W	
ACS-6-3	#4-250 MCM	#4-4/0	.232-.500 (5.9)-(12.7)	.500-.575 (12.5)-(14.6)	3	3 (76.2)	2-5/8 (69.9)	2-7/16 (61.9)	1.9 (.86)
ACS-6-5	#4-250 MCM	#4-4/0			5	3 (76.2)	2-5/8 (69.9)	2-7/16 (61.9)	2.8 (1.27)
ACS-9-3	4/0-600 MCM	4/0-477	.522-.656 (13.3)-(16.7)	.656-.893 (16.7)-(22.7)	3	3-1/4 (82.6)	2-3/4 (69.9)	2-11/16 (68.2)	2.2 (1.0)
ACS-9-5	4/0-600 MCM	4/0-477			5	3-1/2 (88.9)	2-3/4 (69.9)	2-11/16 (68.2)	3.1 (1.41)
ACS-13-3	600-1250 MCM	556.5-1113	.870-1.125 (21.1)-(28.6)	1.125-1.293 (28.6)-(32.8)	3	3-3/4 (95.3)	3 (76.2)	3-3/16 (80.9)	2.5 (1.14)
ACS-13-5	600-1250 MCM	556.5-1113			5	3-3/4 (95.3)	3 (76.2)	3-3/16 (80.9)	3.4 (1.55)
ACS-16-3	1250-2000 MCM	1113-1780	1.289-1.379 (32.0)-(35.0)	1.345-1.632 (34.2)-(41.5)	3	4-1/2 (114.3)	3-1/8 (79.4)	3-9/16 (80.9)	3.1 (1.41)
ACS-16-5	1250-2000 MCM	1113-1780			5	4-1/2 (114.3)	3-1/8 (79.4)	3-9/16 (80.9)	3.9 (1.77)
*ACS-18-3	2000-2500 MCM	2167-2500 MCM	1.632-1.824 (41.5)-(46.3)		3	4-3/4 (120.6)	3-1/4 (82.6)	3-5/8 (92.1)	4.3 (1.95)
*ACS-18-5	2000-2500 MCM	2167-2500 MCM			5	4-3/4 (120.6)	3-1/4 (82.6)	3-5/8 (92.1)	4.5 (2.05)
†*ACS-21-5	2500-3000 MCM	—	1.824-2.00 (46.3)-(50.8)		5	2-3/4 (69.9)	3 (76.2)	3-7/8 (98.4)	3.8 (1.72)

* Do not have reversible cable caps.
† Furnished with one-piece body.

SD-1