

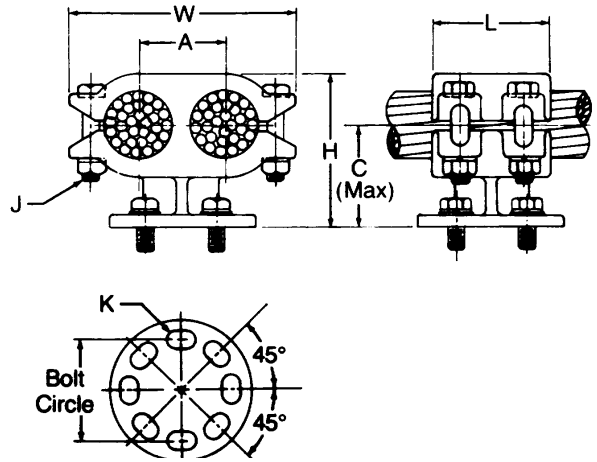
BUS SUPPORTS ALUMINUM TWO CABLES OR TUBES TO INSULATOR

ALUMINUM
ADCS

Aluminum alloy bus support for two parallel aluminum cables or tubes. Clamping bolts have hex-stops for one-wrench installation.

Cap screws are supplied for upright mounting.

Material: Castings—356-T6 aluminum alloy
Clamping hardware—aluminum alloy
Mounting hardware—galvanized steel



SD

CATALOG NUMBER	CONDUCTOR RANGE				BOLT CIRCLE DIA.	DIMENSIONS INCHES (MM)							APPROX. WT. EACH LBS. (KG)
	CABLE			TUBING IPS		L	H	C	W	A	J	K	
	AAC	ACSR	DIA.										
ADCS-50-3	250-556.5 MCM	159-477 MCM	.574-.875 (14.58-22.22)	3/8 -1/2	3	2-1/2 (63.5)	3-1/8 (79.38)	2-1/2 (63.5)	4 (101.6)	1-1/4 (31.75)	1/2 (12.7)	9/16 X 3/4	2.6 (1.2)
ADCS-50-5	250-556.5 MCM	159-477 MCM	.574-.875 (14.58-22.22)	3/8-1/2	5	2-1/2 (63.5)	3-1/8 (79.38)	2-1/2 (63.5)	4 (101.6)	1-1/4 (31.75)	1/2 (12.7)	11/16 x 7/8	2.9 (1.3)
ADCS-75-3	550-900 MCM	556.5-795 MCM	.853-1.108 (21.67-28.14)	1/2	3	3 (76.2)	3-3/4 (95.25)	2-3/4 (69.85)	4-1/2 (114.3)	1-1/2 (38.1)	1/2 (12.7)	9/16 x 3/4	2.7 (1.2)
ADCS-75-5	550-900 MCM	556.5-795 MCM	.853-1.108 (21.67-28.14)	1/2	5	3 (76.2)	3-3/4 (95.25)	2-3/4 (69.85)	4-9/16 (115.9)	1-1/2 (38.1)	1/2 (12.7)	11/16 x 7/8	2.8 (1.27)
ADCS-100-3	800-1113 MCM	795-1033.5 MCM	1.031-1.250 (26.19-31.75)	3/4-1	3	3-1/2 (88.9)	4-1/8 (104.78)	3 (76.2)	4-7/8 (123.82)	1-3/4 (44.45)	1/2 (12.7)	9/16 x 3/4	4.3 (2.0)
ADCS-100-5	800-1113 MCM	795-1033.5 MCM	1.031-1.250 (26.19-31.75)	3/4-1	5	3-1/2 (88.9)	4-1/4 (107.95)	3 (76.2)	4-7/8 (123.82)	1-3/4 (44.45)	1/2 (12.7)	11/16 x 7/8	4.8 (2.2)
ADCS-150-3	1192.5-1510.5 MCM	1113-1431 MCM	1.258-1.427 (31.95-36.24)	1	3	2-1/2 (63.5)	3-7/8 (98.42)	2-3/4 (69.85)	4-7/8 (123.82)	1-7/8 (47.62)	3/8 (9.52)	9/16 X 3/4	3.9 (1.8)
ADCS-150-5	1192.5-1510.5 MCM	1113-1431 MCM	1.258-1.427 (31.95-36.24)	1	5	3 1/2 (88.9)	4-3/4 (120.65)	3-3/8 (85.72)	5-1/4 (133.35)	1-7/8 (47.62)	1/2 (12.7)	11/16 x 7/8	4.9 (2.2)
ADCS-200-3	1300-2000 MCM	1272-1780 MCM	1.314-1.632 (33.38-41.45)	1-1/4	3	4-1/2 (114.3)	5 (127.0)	3-1/4 (82.55)	6-1/4 (158.75)	2-1/4 (57.15)	5/8 (15.88)	9/16 x 3/4	5.6 (2.6)
ADCS-200-5	1300-2000 MCM	1272-1780 MCM	1.314-1.632 (33.38-41.45)	1-1/4	5	4-1/2 (114.3)	5 (127.0)	3-1/4 (82.55)	6-1/4 (158.75)	2-1/4 (57.15)	5/8 (15.88)	11/16 x 7/8	6.2 (2.8)
ADCS-250-5	2000-2500 MCM	2167—	1.630-1.824 (41.4-46.33)	1-1/4	5	3-1/2 (88.9)	5-5/8 (142.88)	4 (101.6)	5-3/4 (146.05)	2-1/8 (53.98)	1/2 (12.7)	11/16 x 7/8	7.1 (3.2)
ADCS-300-5	3000 MCM	—	1.998 (50.75)	1-1/2	5	3-3/8 (92.08)	5 (127.0)	3-1/4 (82.55)	7 (177.8)	2-1/2 (63.5)	5/8 (15.88)	11/16 x 7/8	8.0 (3.6)