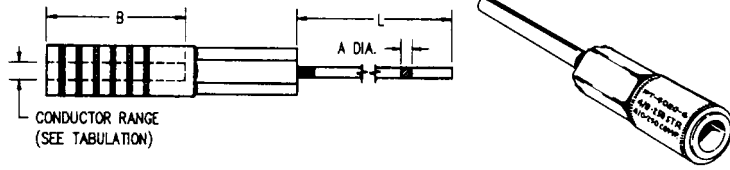


DISTRIBUTION CONNECTORS

BI-METALLIC PIN TERMINALS FOR JOINING ALUMINUM CONDUCTORS TO COPPER EQUIPMENT TYPES PT & PTH

ALUMINUM
PT & PTH



- For use with VERSA-CRIMP® or die-type tooling.
- Sleeve connector is factory compressed over knurled surface of tinned annealed copper rod.
- Provides a compatible bi-metallic transition for joining aluminum conductor to copper based transformer or other equipment terminals. Installed with popular dies.
- Prefilled with rubber compatible electrical joint compound and plugged.

Material: Aluminum
Copper Rod Tin Plated

CATALOG NUMBER	CONDUCTOR RANGE					RECOMMENDED CRIMPING DIE CODES/VC-TOOLS	A PIN (DIA.)	L INCHES (MM)	B INCHES (MM)	COLOR CODE	
	CONVENTIONAL COMPRESSION			VERSA CRIMP							
	ALUM.	ACSR	INCHES	ALUM.	INCHES						
PT-64-2.5	4 Sol., 6 Str. & 6 Comp	6	.167-.206	#8 Str. - #4 Sol. Al. #6 ACSR	.146-.206	ANDERSON-VC6 (ALL) EEI-8A BURNDY-BG,243 KEARNEY-5/8 ALCOA-08AH T&B-TU 52 BLACKBURN-5/8	4 Sol. (.204")	2-1/2 (63.5)	1 (25.4)	BLUE	
PT-44-2.5	2 Sol., 3-4 Str. & 4 Comp	4	.204-.258	#8 Str. - #2 Sol. Al. #6-#4 ACSR	.146-.258		4 Sol. (.204")	2-1/2 (63.5)	1 (25.4)	ORANGE	
PTH-42-6	2 Sol., 3-4 Str. & 4 Comp	4	.204-.258	#8 Str. - #2 Sol. Al. #6-#4 ACSR	.146-.258		2 Sol. (.258")	6 (152.4)	1-3/4 (44.4)	ORANGE	
PT-24-2.5	1-2 Str. 1/0 Sol. 2 Comp Str.	2	.268-.328	#8-#1 Str. Al. #6-#2 ACSR	.146-.328		4 Sol. (.204")	2-1/2 (63.5)	1 (25.4)	RED	
PT-22-6	1-2 Str. 1/0 Sol. 2 Comp. Str.	2	.268-.328	#8-#1 Str. Al. #6-#2 ACSR	.146-.328		2 Sol. (.258")	6 (152.4)	1 (25.4)	RED	
PTH-22-6	1-2 Str. 1/0 Sol. 2 Comp. Str.	2	.268-.328	#8-#1 Str. Al. #6-#2 ACSR	.146-.328		2 Sol. (.258")	6 (152.4)	1-3/4 (44.4)	RED	
PT-102S-2.5	1/0 Str. 1/0 Comp	1/0	.336-.398	#8-1/0 Str. Al. #8-1/0 ACSR	.146-.398		2 Sol. (.258")	2-1/2 (63.5)	1 (25.4)	YELLOW	
PT-102S-6	1/0 Str. 1/0 Comp	1/0	.336-.398	#8-1/0 Str. Al. #8-1/0 ACSR	.146-.398		2 Sol. (.258")	6 (152.4)	1 (25.4)	YELLOW	
PTH-102-6	1/0 Str. 1/0 Comp	1/0	.336-.398	#8-1/0 Str. Al. #8-1/0 ACSR	.146-.398		2 Sol. (.258")	6 (152.4)	1-3/4 (44.4)	YELLOW	
PT-102-6	1/0 Str. 1/0-2/0 Comp	1/0	.336-.398	#4-1/0 Str. Al. #4-1/0 ACSR	.232-.398		2 Sol. (.258")	6 (152.4)	1-7/8 (47.75)	YELLOW	
PT-2010-2.5	2/0 Str. 3/0 Comp	2/0	.414-.448	#4-2/0 Str. Al. #4-2/0 ACSR	.232-.448		ANDERSON-VC6 (ALL) EEI-11A BURNDY-249,840 KEARNEY-840 ALCOA-11AH T&B-TX 76 BLACKBURN-840 or B49 ea.	1/0 Sol. (.325")	2-1/2 (63.5)	1-7/8 (47.75)	GRAY
PT-2010-6	2/0 Str. 3/0 Comp	2/0	.414-.448	#4-2/0 Str. Al. #4-2/0 ACSR	.232-.448			1/0 Sol. (.325")	6 (152.4)	1-7/8 (47.75)	GRAY
PT-3010-6	3/0 Str. 4/0 Comp	3/0	.464-.502	#4-3/0 Str. Al. #4-3/0 ACSR	.232-.502			1/0 Sol. (.325")	6 (152.4)	1-7/8 (47.75)	BLACK
PT-4020-6	4/0-250 Str. 250-300 Comp	4/0	.522-.575	#4-250 Str. Al. #5-4/0 ACSR	.232-.575			2/0 Sol. (.365")	6 (152.4)	1-7/8 (47.75)	PINK
PT-34940-6	300-350 Str. 350-400 Comp	336-18/1	.618-.684	#1-350 Str. #1-336-18/1	.328-.684	4/0 Sol. (.460")		6 (152.4)	1-7/8 (47.75)	NONE	
PT-30050-6	250-300 Str. 300-350 Comp.	4/0 266-18/1	.564-.630	3/0-300 Str. 3/0-266.8-18/1	.464-.630	ANDERSON-VC6-FT VC6-500 VC6-3 EEI-13A; ALCOA-13AH BURNDY-316,655,705 KEARNEY-1-1/8 T&B-96 BLACKBURN B80 ea.		4/0 Sol. (.460")	6 (152.4)	2-7/8 (73.15)	NONE
PT-35050-6	300-350 Str. 350-400 Comp.	266-6/7 336-18/1	.616-.684	3/0-350 Str. 3/0-336.4-18/1	.464-.684			4/0 Sol. (.460")	6 (152.4)	2-7/8 (73.15)	NONE
PT-40050-6	336-400 Str. 500 Comp. Str.	336-36/1 397-18/1	.666-.743	4/0-400 Str. 4/0-397-18/1	.522-.743			4/0 Sol. (.460")	6 (152.4)	2-7/8 (73.15)	NONE
PT-50050-6	450-500 Str. 600 Comp. Str.	397-18/1 477-18/1	.743-.814	4/0-500 Str. 4/0-477-18/1	.522-.814			4/0 Sol. (.460")	6 (152.4)	2-7/8 (73.15)	NONE
PT-45062-6	450-500 Str. 600 Comp. Str.	397-18/1 477-18/1	.743-.814	250-500 Str. 266-18/1-477-18/1	.574-.814			ANDERSON VC6-FT & VC8 EEI-14A, ALCOA-14AH; KEARNEY 1-5/16; T&B 106 BURNDY 317, 327 OR 719;	5/8 (.625")	6 (152.4)	2-7/8 (73.15)
PT-55062-6	500-556.5 Str.	477-18/1 556-18/1	.814-.879	350-556.5 Str. 266-26/7-556-18/1	.679-.879	ANDERSON VC8 BURNDY 301, 342, 608, 724, 786 KEARNEY-1 1/2 ALCOA-24 AH T&B-125	5/8 (.625")		6 (152.4)	2-7/8 (73.15)	NONE
PT-80075-6	700-800 Str. 1000 Comp. Str.	605-26/7 715-36/1	.964-1.031	600-800 Str. 605-36/1-715-36/1	.891-1.031		ANDERSON VC8 BURNDY 292, 302, 352, 579, 725, ALCOA-30 AH T&B 150 KEARNEY-1 3/4	3/4 (.750")	6 (152.4)	2-7/8 (73.15)	NONE
PT-1000876	900-1033 Str.	795-26/7 954-54/7	1.092-1.196	750-1033 636-26/7-954-54/7	.988-1.196	7/8 (.875")		6 (152.4)	4-5/8 (117.6)	NONE	

DF 5