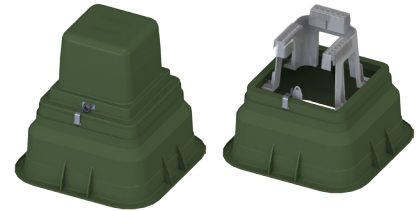


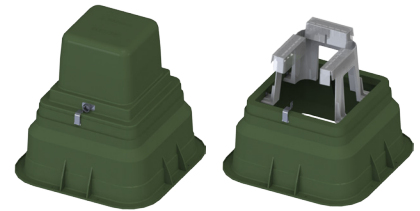
Pedestals, Plastic

Features: PSP-151530-MG-L6350 or PSP-151530-MG-L6600

- Rust free materials and stainless steel hardware.
- Copolymer polypropylene pedestals are manufactured by an injection molding process with UV stabilized material. Polypropylene pedestals resist fertilizers, salt air, and ultraviolet attack.
- The green pigment is permanently molded into the copolymer polypropylene and can-not peel or rust.
- “WARNING”, “ELECTRIC”, is molded into the pedestal top for easy identification.
- Top cover has room for labels in the front.
- The top is secured to the base by a flange molded into the rear of the pedestal top and a penta-head bolt and hasp on the front.
- Accommodates three 6 port 350MCM or 600MCM connectors.
- Clear plastic covers included when connectors are ordered.
- Optional cable entrance cover available.
- All locking hardware is stainless steel.



PSP-151530-MG-L6350



PSP-151530-MG-L6600



PSP-151530-MG-CE



PSPF-101538-MG-L6350

Features: PSPF Series & PSPS Series

- Rust free materials and stainless steel hardware.
- Linear low density polyethylene material is UV stabilized.
- “ELECTRIC” is molded into the pedestal top for easy identification.
- There is an 8” x 10” label area molded in.
- Accommodates three or four 6 port 350 or 500 MCM connectors.
- Clear plastic covers included when connectors are ordered.
- All locking hardware is stainless steel.
- Suggested burial depth up to the molded in “GROUND LINE”.
- Molded step design resists deflection when buried.
- Optional cable entrance cover available.
- PSPF Series has a flared bottom design allows for ample cable training, increased stability in a variety of soil conditions, and pedestal stacking.



PSPF-101538-MG-CE



PSPS-101544-MG-X

Pedestals	Height	Top Lid	Base Height	Suggested Burial Depth	Connectors
PSP-151530-MG-L6350	30"	15" x 15" x 15"	15"	12"	3 Lay-in, 6 port, 350MCM
PSP-151530-MG-L6600	30"	15" x 15" x 15"	15"	12"	3 Lay-in, 6 port, 600MCM
PSPF-101538-MG-X	38"	10" x 15" x 17"	35.5"	16"	None
PSPF-101538-MG-L6350	38"	10" x 15" x 17"	35.5"	16"	3 Lay-in, 6 port, 350MCM
PSPF-101538-MG-4L6350	38"	10" x 15" x 17"	35.5"	16"	4 Lay-in, 6 port, 350MCM
PSPF-101538-MG-6500	38"	10" x 15" x 17"	35.5"	16"	3, 6 port, 500MCM
PSPF-101538-MG-46500	38"	10" x 15" x 17"	35.5"	16"	4, 6 port, 500MCM
PSPS-101544-MG-X	44"	10" x 15" x 22"	35.5"	16"	X-None, however, available with connectors like the PSPF Series